

# MONTHLY MEMBERSHIP PROGRESS REPORT

LOCATION VIRGINIA

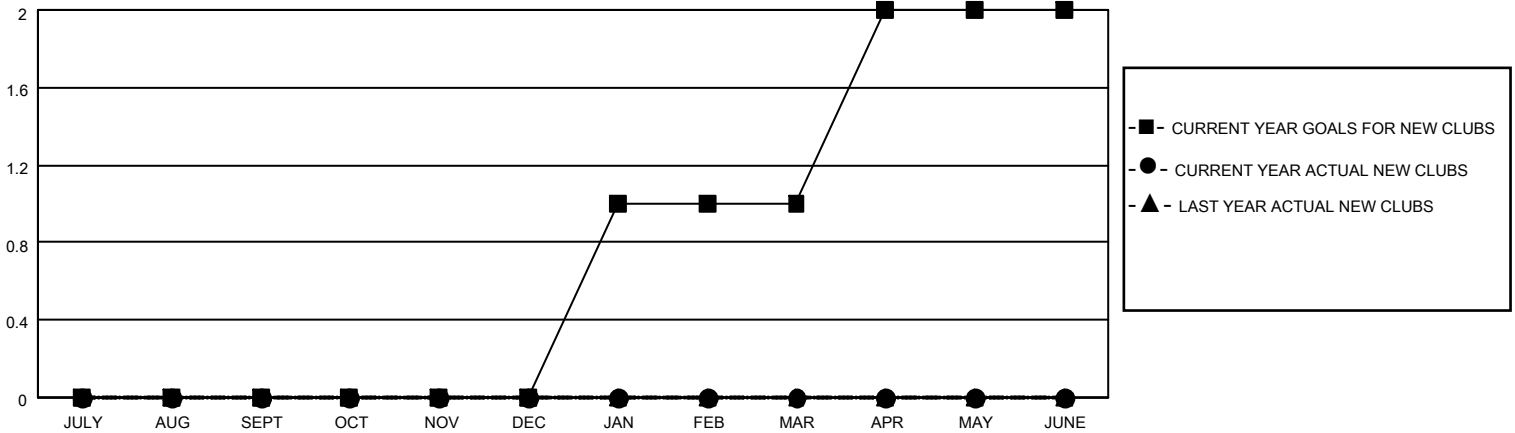
District 24 L

Results as of: 4/30/2023

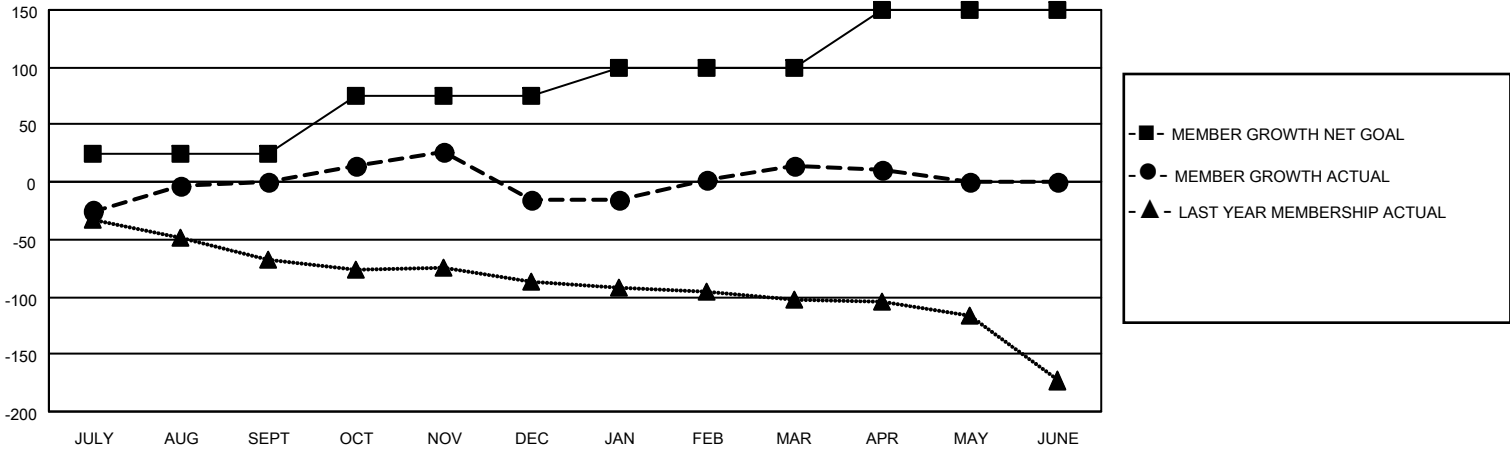
Clubs			
RESULTS FOR 2022-2023			
QUARTER	NEW CLUB GOAL	NEW CLUBS	DROPPED CLUBS
JULY/AUG/SEPT	0	0	1
OCT/NOV/DEC	0	0	2
JAN/FEB/MAR	1	0	0
APR/MAY/JUNE	1	0	0

Members			
RESULTS FOR 2022-2023			
QUARTER	MEMBER GROWTH NET GOAL	MEMBER GROWTH ACTUAL	DROPPED MEMBERS ACTUAL (including transfers)
JULY/AUG/SEPT	25	84	70
OCT/NOV/DEC	50	77	92
JAN/FEB/MAR	25	101	55
APR/MAY/JUNE	50	17	21

**GOALS AND ACTUAL NEW CLUBS CUMULATIVE**



**GOALS AND ACTUAL MEMBERS CUMULATIVE**



<b>DROPPED CLUBS: 3</b>	
<b>DROPPED MEMBERS</b>	
DECEASED	38
CLUB CANCELLED	26
OTHER	174
<b>TOTAL</b>	<b>238</b>

52 CLUBS OF 89 ADDED 1 OR MORE NEW MEMBERS

[CLICK HERE FOR CUMULATIVE MEMBERSHIP DATA](#)

<u>GENDER DISTRIBUTION</u>	
MALE	1,480 (61.49%)
FEMALE	927 (38.51%)
NON BINARY	0 (0.00%)
PREFER NOT TO ANSWER	0 (0.00%)
<b>TOTAL FAMILY UNIT MEMBERS</b>	<b>433</b>
<b>FAMILY MEMBERS PAYING HALF DUES</b>	<b>218</b>